

Reversing into a road on the left

WHY WOULD YOU NEED TO?

The road you are on may be blocked off or be a dead end (no through road). There may not be enough space to turn your vehicle around in the road, therefore you may need to reverse into a side road to be able to continue your journey.

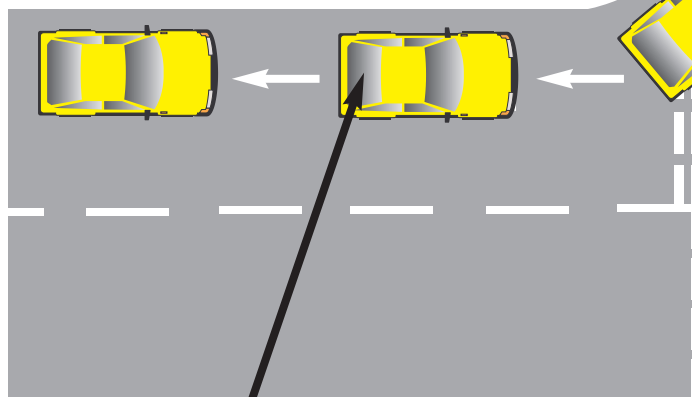
LOCATION

You must ensure it is **safe, legal and convenient**.

This will include checking up the side road that it is safe to reverse into - check it is clear of parked cars, pedestrians, etc. Do not reverse onto a main road or where there is a no entry sign. Choose somewhere quiet for practicing and avoid continuous attempts at the same location.

ON THE DRIVING TEST

The examiner will ask you to stop before a side road on the left. You will be required to reverse into the road on your left doing so safely and under control, keeping reasonably close to the kerb. Carrying out the manoeuvre safely will include constant observation at each stage, particularly for oncoming traffic and pedestrians who will have priority over you. Under full control will mainly be ensuring the speed is kept low and the steering is correct throughout. To keep the speed low try reversing with the clutch pedal just at or near the biting point, take into account any slopes including the camber of the road so that the car does not run away from you! Avoid hitting the kerb.

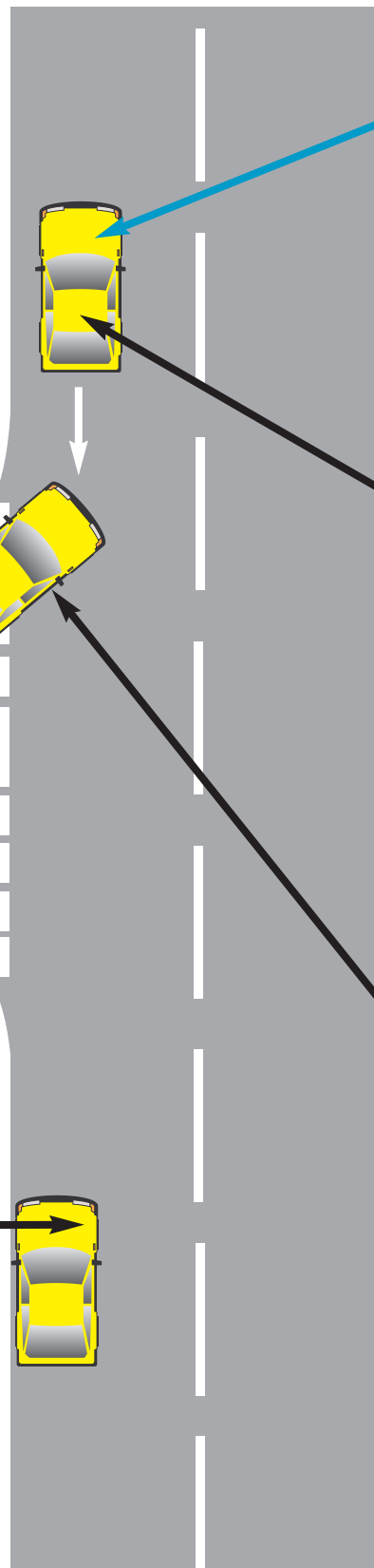


OBSERVATIONS

As you continue reversing be checking over your left shoulder out of the rear window, you can have the occasional glance in your nearside (left) mirror to assess how close and parallel you are to the kerb.

STOP BEFORE THE SIDE ROAD

As you pass the side road, try and assess how wide it is as well as checking up the road to check it is clear and safe to reverse into. The sharper the corner the more steering you will need to keep reasonably close to the kerb. As a rough guide an average corner would need approximately one full turn of the wheel and a very sharp corner may take full lock of the wheel.



BEGINNING THE MANOEUVER

GETTING READY

Stop your vehicle reasonably close to the kerb - about a foot away. You may find it easier to turn slightly in your seat to make observations out of the rear window easier.

CARRYING OUT THE MANOEUVER P.O.M.

Prepare: Select reverse gear, set the gas and bring clutch pedal to biting point. Observations: check all round for pedestrians and approaching traffic - including checking people's driveways. Move: Reverse slowly facing over your left shoulder out of rear window.

OBSERVATIONS

At this point you create the greatest hazard - make sure you check over your right shoulder for anything approaching (if necessary, stop your car and continue when safe).

If anyone approaches - stop and allow them to pass